

BUSINESS AND SCIENCE UNITED

**BIO
CITY**

LEIPZIG

Biotechnologisch-
Biomedizinisches Zentrum

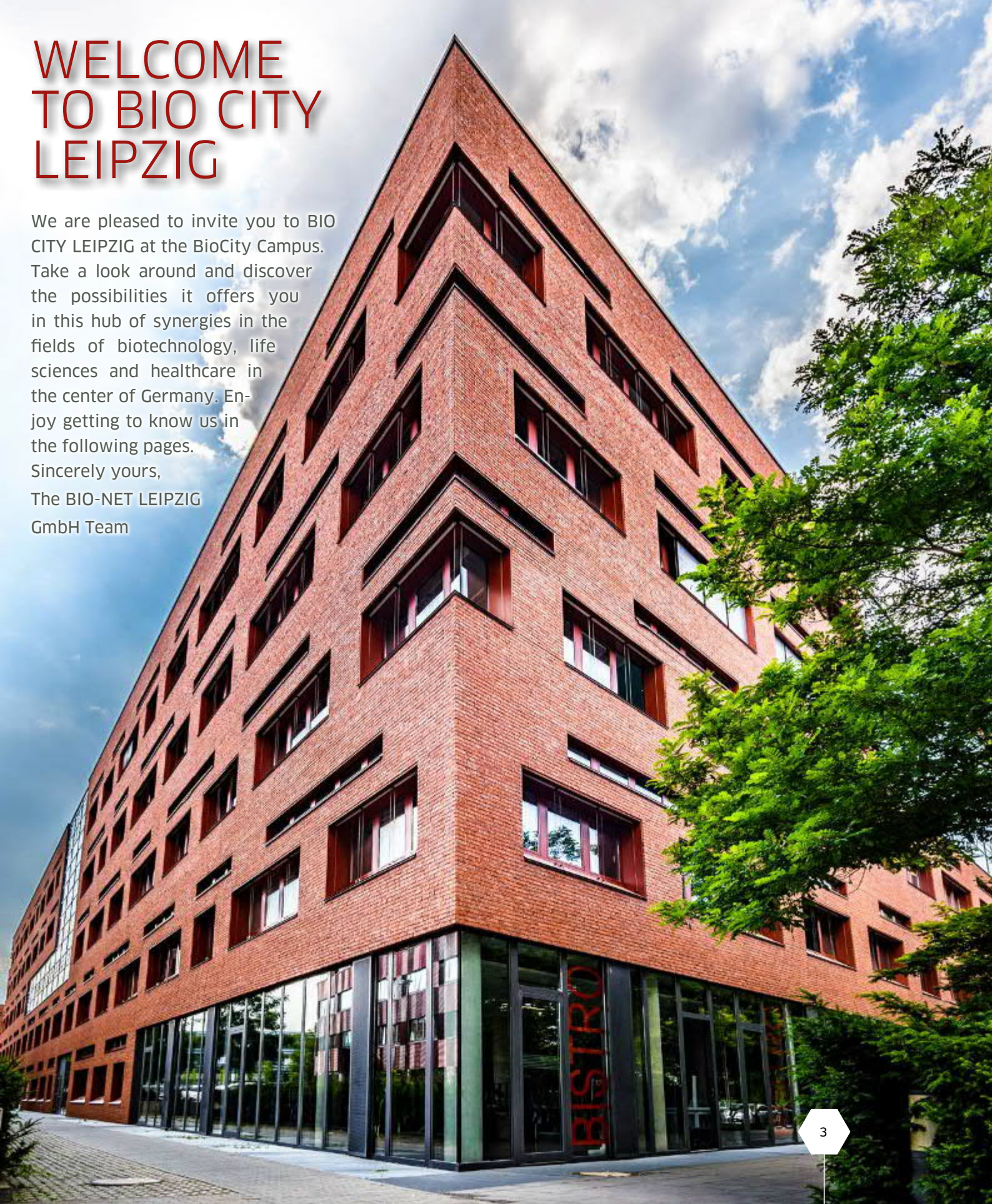


CONTENTS

CONTENTS	2
WELCOME TO BIO CITY LEIPZIG	3
BIOCITY CAMPUS	4
BIO CITY LEIPZIG	6
BIOCUBE	7
SUCCESS STORIES	8
A SPECIAL PLACE DEMANDS SPECIAL OFFERINGS	10
CENTER FOR BIOTECHNOLOGY AND BIOMEDICINE	12
BIO-NET LEIPZIG GMBH	16
YOUR NETWORK - DELIVERED.	18
SMILE	20
IDIV: GERMAN CENTER FOR INTEGRATIVE BIODIVERSITY RESEARCH	21
MAX PLANCK INSTITUTE FOR EVOLUTIONARY ANTHROPOLOGY	22
FRAUNHOFER INSTITUTE FOR CELL THERAPY AND IMMUNOLOGY (IZI)	23
LEIPZIG UNIVERSITY: FACULTY OF VETERINARY MEDICINE (VMF)	24
UNIVERSITY OF LEIPZIG HOSPITALS AND CLINICS	25
LEIPZIG	26

WELCOME TO BIO CITY LEIPZIG

We are pleased to invite you to BIO CITY LEIPZIG at the BioCity Campus. Take a look around and discover the possibilities it offers you in this hub of synergies in the fields of biotechnology, life sciences and healthcare in the center of Germany. Enjoy getting to know us in the following pages. Sincerely yours,
The BIO-NET LEIPZIG GmbH Team



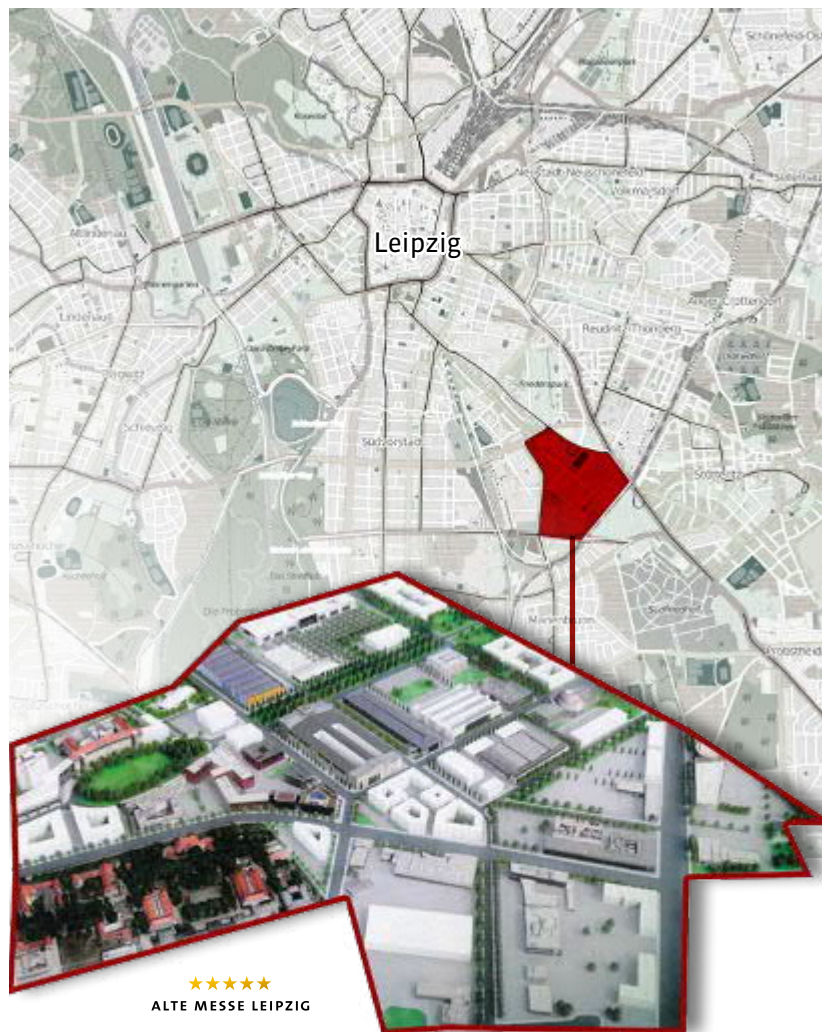


BIOCITY CAMPUS

MAKE IT YOUR HOME

BioCity Campus is the biotechnology and life sciences park located on the historical grounds of the former Leipzig Trade Fair close to the city center. The area hosts a biotechnology and biomedical cluster capable of incorporating the benefits of neighboring research facilities that will continue to support resident enterprises through a targeted extension of the value-creation chain. This unique place has 100,000 square meters

reserved for further development. New biotech companies are welcome here – you can find just the right place for your vision. Benefit from the synergies on site and get to know your new neighborhood. Your business will benefit not only from an internationally recognized environment, but also from the location itself. Our local partners will support you in every way in setting up business here – in terms of infrastructural needs,



financing and all other related topics. BIO-NET LEIPZIG GmbH will help you and guide you through this process - connecting you with the right people at the right time.

As an employer, you will find highly qualified staff from one of Leipzig's universities and higher education institutions. No matter where your employees come from, they will enjoy working and living in Leipzig. The BioCity Campus provides a kindergarten, an elementary school, parking spaces, apartments nearby, and a supermarket to make things easy for your staff.

Be part of us. Make BioCity Campus your home and fully explore its potential.



BIO CITY LEIPZIG BUSINESS AND SCIENCE CONNECTED

We invite you to explore your options at the nucleus of the BioCity Campus. Since its opening in 2003, the technology and business incubator BIO CITY LEIPZIG has contributed to the success of many biotechnology and life science companies in Leipzig.

Here at BIO CITY LEIPZIG we connect business and science under one roof in our 20,000 square meter space. Seventy-five percent of the property is owned by the LGH Leipziger Gewerbehof GmbH & Co. KG, and is available

for companies in the cluster to rent, while twenty-five percent is used by the Center for Biotechnology and Biomedicine at the Leipzig University. This alliance bundles synergies and is promoted through teaching, research, development, production and technology transfer.

BIO CITY LEIPZIG is the place to be when it comes to bringing your biotech company to life. Our staff is happy to answer any questions and to welcome you.



BIO CITY LEIPZIG offers:

- flexible floor plans for individual rental spaces
- BSL-1 / BSL-2 laboratory spaces
- central building control systems
- emergency power supplies
- a cafeteria, an underground parking garage, and seminar and conference rooms

BIOCUBE

Companies that started at BIO CITY LEIPZIG and “grew up” moved into the newly built BioCube in 2013. Four companies found their new homes here to continue successfully building their businesses. Close links with the research community and the synergies with the BioCity Campus are the reasons why they chose to stay in this special location.





**DR. MARC STRUHALLA,
CEO AND FOUNDER OF C-LECTA**

“c-LEcta is a spin-off from the Center for Biotechnology and Biomedicine at BIO CITY LEIPZIG specialized in providing customized enzymes and microbial production strains for industry. The main reasons we chose Leipzig for our location were the attractive economic conditions, the synergistic scientific community at the BioCity Campus, and the great support from the local promotion agencies. In order to expand our space to be able to further grow our business, we left BIO CITY LEIPZIG and moved into the newly built BioCube in 2013.”



DR. ANDRÉ GERTH, CEO OF VITA 34 AG

“Moving to BIO CITY LEIPZIG was a very important step for Vita 34 on our way to success. In this location, with its close proximity to the university, research institutes and other businesses in the biotechnology and biomedical sector, we found the perfect conditions to intensify our joint research activities. With workrooms equipped with state-of-the-art infrastructure such as our unique “Glass Laboratory,” we meet the continuously increasing safety and quality requirements at all times. Following the completion of the BioCube in 2013, Vita 34 was also able to expand its business. The new additional space enables us to safely store stem cells for up to 350,000 of our German or European clients and carefully prepare them for transport back to the client should the need arise.”



SUCCESS STORIES

JÖRG FAHRENBACH, MANAGEMENT BOARD, HAEMA AG

“The decision of the City Leipzig to build the Haema company headquarters extended the very successful cooperation between the City of Leipzig and the Free State of Saxony. At BIO CITY LEIPZIG located near the University School of Medicine, research institutions and other biotech companies, we found the perfect place to establish what became the largest independent blood and plasma donation service in Germany in 2005. The excellent existing conditions and the availability

of highly-qualified personnel were important factors for Haema’s success story, factors that helped us maintain the rapid growth of our blood and plasma donation centers nationwide. In 2012, more space was needed to keep up with growth and fulfill the urgent need for blood products. We intentionally chose the old trade fairgrounds in Leipzig in the neighborhood very close to our old home at BIO CITY LEIPZIG as the location for our new company headquarters.”



A SPECIAL PLACE DEMANDS SPECIAL OFFERINGS

As a tenant here at BIO CITY LEIPZIG, you receive special offers from chosen partners when it comes to your business. Hotels, car services, insurance, public relations, software and credit assessments make up just a short list of our offerings.

Through our membership and input into key German biotechnology and life sciences groups, we not only represent our tenants

here at BIO CITY LEIPZIG. We are also happy to raise your specific issues with the appropriate committee.

Leipziger Gewerbehof GmbH & Co. KG, as owner of the commercial part of BIO CITY LEIPZIG, is a member of ADT - the German Association of Innovation, Technology and Business Incubation Centers, which provides you with additional benefits.



Consider us as your host. We welcome your guests with our central reception service, manage parking spaces, handle postal services and present your marketing materials to visitors.

Tenants can book our conference rooms at special rates for their events and workshops. Our big conference room (110 square meters) can host up to 100 guests. Thanks to its flexible room concept, we can divide the room into two smaller conference rooms and set it up individually. Would you like more?

- Working Group BioParks of ADT
- Working Group of German BioRegions
- BioDeutschland's Working Group on Technology Transfer
- Bio Deutschland e.V.
- biosaxony e.V.
- Association for the Promotion of the Healthcare Industry in the Leipzig Region e.V.

BIO CITY LEIPZIG's atrium provides you with a perfect space for your trade shows and events. The breathtaking atmosphere underlines your theme and perfectly showcases your event. To satisfy your guests' appetites, you can book our in-house caterer who will create something special for your event.



CENTER FOR BIOTECHNOLOGY AND BIOMEDICINE AT LEIPZIG UNIVERSITY IN THE BIO CITY LEIPZIG

HIGH TECH RESEARCH AND DEVELOPMENT IN RATIONAL DRUG DESIGN

With dedicated expertise in natural and medical sciences, research groups from six faculties gather under the same roof in the Center for Biotechnology and Biomedicine, teaming up in an interdisciplinary research center. Cutting edge basic and applied research in life sciences and micro- and nano-

technologies have created a competitive incubator that is dedicated to innovating the process of rational drug design and transferring knowledge on an international scale.

STATE-OF-THE-ART RESEARCH FACILITIES

Our overall research goal is to develop and validate novel technologies and instruments



in the field of high-throughput / high-content screening and diagnostics, as well as rational drug design. In doing so, we are able to address a number of diseases such as cardiovascular, degenerative, oncological, endocrinological, metabolic or infectious diseases. As a consequence, a number of disciplines converge in our research portfolio. Basic research ranges from protein structure analysis to *in silico* drug molecule design and synthesis, and extends into applied research of molecular cell therapy and stem cell therapy.





Applied research also encompasses cell reprogramming and the development of cell and tissue transplants. Novel biosensors and microchip-based screening platforms are designed to allow a highly predictive screening of drugs and compounds in high-throughput.

TECHNOLOGY PLATFORMS

Our ambitious research goals are supported



by state-of-the-art technology platforms that comprise STED and STORM high-resolution microscopy, mass spectrometry and protein crystallography, multiphoton microscopy, as well as a clean room facility for microchip fabrication and nanostructuring that interacts with a comprehensive bioelectronic monitoring platform.

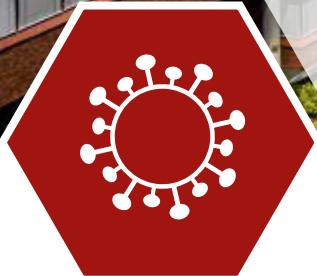


TRANSFER OF KNOWLEDGE AND TECHNOLOGY

Leipzig University is committed to training and passing on scientific excellence to future generations. Advanced students and doctoral candidates are therefore actively involved in both academic education and current research projects. That is why we take pride in the fact that a number of Leipzig University

alumni have built successful businesses in the region and elsewhere.

In response to the dynamics of the technology transfer process, Leipzig University has established an office dedicated to identifying research of commercial interest or having potential areas for cooperation and technology transfer between academia and industry.



BIO-NET LEIPZIG GMBH YOUR PARTNER FOR MUTUAL GROWTH

As Cluster Manager, we are your partner for technology transfer at BIO CITY LEIPZIG. Our experts offer support at all stages of the development of your business. We help you transfer research results into industrial applications. Need advice from someone with a hands-on mentality? Contact us for anything related to

funding, marketing, individual advice, guidance and much more.

For special needs our experienced crew cannot meet, we know just the right people who can. Profit from our strong network at the BioCity Campus in Leipzig in the Free State of Saxony. We are also able to arrange contacts with



federal ministries or the European Commission, and initiate R&D projects.

BIO-NET LEIPZIG GmbH - your key contact for business development in biotechnology, healthcare and life sciences in Leipzig. Do you have any questions? We are always a good point of contact for your issues.





YOUR NETWORK - DELIVERED.

We are aware of the importance of a strong network. Here at BIO CITY LEIPZIG you benefit from partners who welcome you with open arms.

ASSOCIATION FOR THE PROMOTION OF THE HEALTHCARE INDUSTRY IN THE LEIPZIG REGION E.V.

We promote the Leipzig Region as a leading center for medicine, science and in clinical

practice across Germany and internationally. Our work particularly focuses on the further development of the Leipzig Region as an example of international best practices in the healthcare sector.

Through participation in national and European projects, we promote interaction and communication between regional and foreign entities. The coordination of knowledge transfer and



biosaxony members
www.biosaxony.com

biosaxony
Biotechnology and Life Sciences

collaboration between research institutions and partners in the industry is an important task we fulfill.

Are you looking for contacts with the players in this sector in the region? Get in touch with us.

BIOSAXONY

biosaxony is Saxony's biotechnology cluster with offices in Leipzig and Dresden. Our members represent different life sciences compa-

nies, scientific institutions and stakeholders. As a cluster, our aim is to initiate cooperative projects between companies and scientists, providing services and know-how, leveraging synergies for developing the industry and representing regional competencies. The cluster management supports and initiates innovative projects, such as for instance in cross-cluster-cooperations with Europe's biggest micro-electronics an ICT-Cluster Silicon Saxony.

Profit and join our experienced cluster.

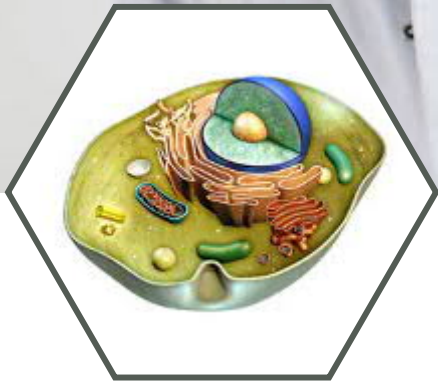


SMILE

We at SMILE support students, graduates and academic staff on their way to personal and professional independence. SMILE stands for Self Management Initiative Leipzig. This initiative offers a learning environment that allows participants to discover their potential and skills, and to expand and use it for themselves and others. We provide very individual guidance and support for starting up businesses.

Thanks to their own entrepreneurial experiences, most SMILE employees are familiar with a personal approach to the opportunities and risks of entrepreneurship. With knowledge, experience and passion to create something new, we have coached more than 40 start-up teams to turn their business ideas into reality.

We are located next door to BIO CITY LEIPZIG to support entrepreneurs in the industry.



IDIV: GERMAN CENTER FOR INTEGRATIVE BIODIVERSITY RESEARCH

At the German Center for Integrative Biodiversity Research (iDiv), our internationally established research groups devote their work to various aspects of modern biodiversity science. We aim to bring research projects together in one central place along with top scientists and integrate the manifold results, which will be made available to the public. The center is jointly hosted by the three central German Universities of Halle, Jena and Leipzig. Within iDiv, the universities combine their excellent research

with the work and experience of eight non-university institutions to influence other fields of research as well. Our corresponding synthesis center sDiv organizes international workshops and conferences, which attracts scientists from around the world to Leipzig. yDiv, the Research Training Group of iDiv, was established to promote young scientists and currently trains over 30 international doctoral researchers.

Experience modern biodiversity research in Leipzig.



MAX PLANCK INSTITUTE FOR EVOLUTIONARY ANTHROPOLOGY

We investigate human history from an interdisciplinary perspective using comparative analyses of genes, cultures, cognitive abilities and social systems of past and present human populations, as well as those of primates closely related to human beings. To do this, our researchers study apes in their natural habitats and in the Wolfgang Köhler Primate Research Center (Zoo). They investigate how children learn and use cultural acquisitions,

social conventions, symbols and other cultural phenomena. Our researchers analyze fossil hominids and reconstruct their biology, behavior and cultural evolution. They study the genetic history of humans, apes and other organisms, and the sequencing of the Neanderthal genome is one of their flagship projects. We partner with institutions from all over the world. Our staff of 450 comes from more than 30 different countries.



FRAUNHOFER INSTITUTE FOR CELL THERAPY AND IMMUNOLOGY (IZI)

The Fraunhofer Institute for Cell Therapy and Immunology IZI investigates and develops solutions to specific problems at the interfaces of medicine, life sciences and engineering.

One of our main tasks is to conduct contract research for companies, hospitals, diagnostic laboratories and research institutes operating in the field of biotechnology, pharmaceuticals and medical engineering.

Our areas of competence lie in cell biology,

immunology, drug biochemistry, bioanalytics and bioproduction, as well as process development and automation.

We work in close cooperation with hospital institutions and perform quality tests in addition to carrying out the GMP-compliant manufacture of clinical test samples. Furthermore, we help partners obtain manufacturing licenses and permits.



LEIPZIG UNIVERSITY: FACULTY OF VETERINARY MEDICINE (VMF)

The Faculty of Veterinary Medicine (VMF) at Leipzig University is situated in the immediate vicinity of BIO CITY LEIPZIG. More than 150 scientists work in 5 departments on the VMF Campus. VMF is a professional educational institution, a place of research and a service provider committed to animal welfare. Its interdisciplinary research covers a wide range of topics from basic research on cells of the immune system to applied problems in veterinary practice such as the metabolic disorders

of livestock. It includes basic modern biomedical research, as well as experimental work on animals and innovative veterinary clinical research. The facilities feature modern molecular biology labs, state of the art imaging (3-Tesla MRI, CT, ultrasound, szintigraphy), core units for flow cytometry (FACS) and laser scanning microscopy, and a fluoroscopic unit for locomotion analysis. Research activities focus on four areas: locomotion, the nervous system, the respiratory system and the gastrointestinal tract.



UNIVERSITY OF LEIPZIG HOSPITALS AND CLINICS

Outstanding research, excellent teaching and the best healthcare are the hallmarks of the Leipzig Faculty of Medicine and the University of Leipzig Hospitals and Clinics. Founded in 1415, Leipzig University is the second oldest German university medical facility. Our qualified teams dedicate their work to human health. Located in the heart of Leipzig, the medical campus belongs to the Liebigstrasse - the most modern university clinic in all

of Germany with the best conditions for inpatient and outpatient healthcare. We quickly transfer new findings from performance-related medical research and innovative teaching concepts into medical practice. The extension of the research partnership with the faculties of the university, research institutions in the region and innovative companies at BIO CITY LEIPZIG are vital for present and future research.



LEIPZIG

BE CONNECTED AND ENJOY LIFE

Located in the center of Europe, Leipzig is integrated into one of the highest performing business regions on the continent. The city offers an exciting symbiosis of the traditional and the modern. You will find the diversity of a lively metropolis, but also green spaces to relax. With its universities and higher education facilities, Leipzig can provide your company with highly qualified personnel

and schools where your employees can send their children. Leipzig also scores high with affordable apartments, great infrastructure, an internationally recognized healthcare system and strong business partners.

The highway system, airport and inter-city trains provide optimum links between Leipzig and other commercial centers in Germany and elsewhere in Europe.



But Leipzig has one priceless advantage as a location: the friendly atmosphere of a city in which trade, change and research carry on their great tradition.

Goethe. Bach. Porsche. DHL. - When will you connect your success with us?

Welcome to Leipzig!

BIO-NET LEIPZIG
Technologietransfergesellschaft mbH

Deutscher Platz 5a
04103 Leipzig
Germany
Tel. +49 (0) 341 2 12 07 0
Fax +49 (0) 341 2 12 07 11
www.bio-net-leipzig.com
info@bio-net-leipzig.com

NETWORKS
FINANCING
RESEARCH
COACHING
MARKETING

**BIO-NET
LEIPZIG**

TECHNOLOGY
TRANSFER

Kindly supported by:



We give sincere thanks to our partners for the use of their photographic materials:
LEVG LEIPZIG GmbH (Map BioCity Campus, p.5), Openstreetmap (Map Leipzig, p.5), Vita 34 AG (Dr.André Gerth, p. 8), Haema AG (Jörg Fahrenbach, Haema p. 9), Syda Productions / Fotolia.com (p. 16), Mikko Lemola / Fotolia.com (p. 17), vege / Fotolia.com (p. 18), biosaxony e.V. (map, p. 19), Rawpixel / Fotolia.com, koya979 / Fotolia.com (p. 20), iDiv / Christian Hüller, Andrea Danti / Fotolia.com (p. 21), Max Planck Institute for Evolutionary Anthropology (p. 22), Leipzig University Faculty of Veterinary Medicine (p. 24), University of Leipzig Hospitals and Clinics (p. 25), F. Seidel / Fotolia.com (p. 26), FUGE Freiburg / Fotolia.com (silhouette p. 26), Marcel Schauer / Fotolia.com (p. 27), Deutsche Post AG (Airport p. 27), cover and all others: www.augen-futter.com